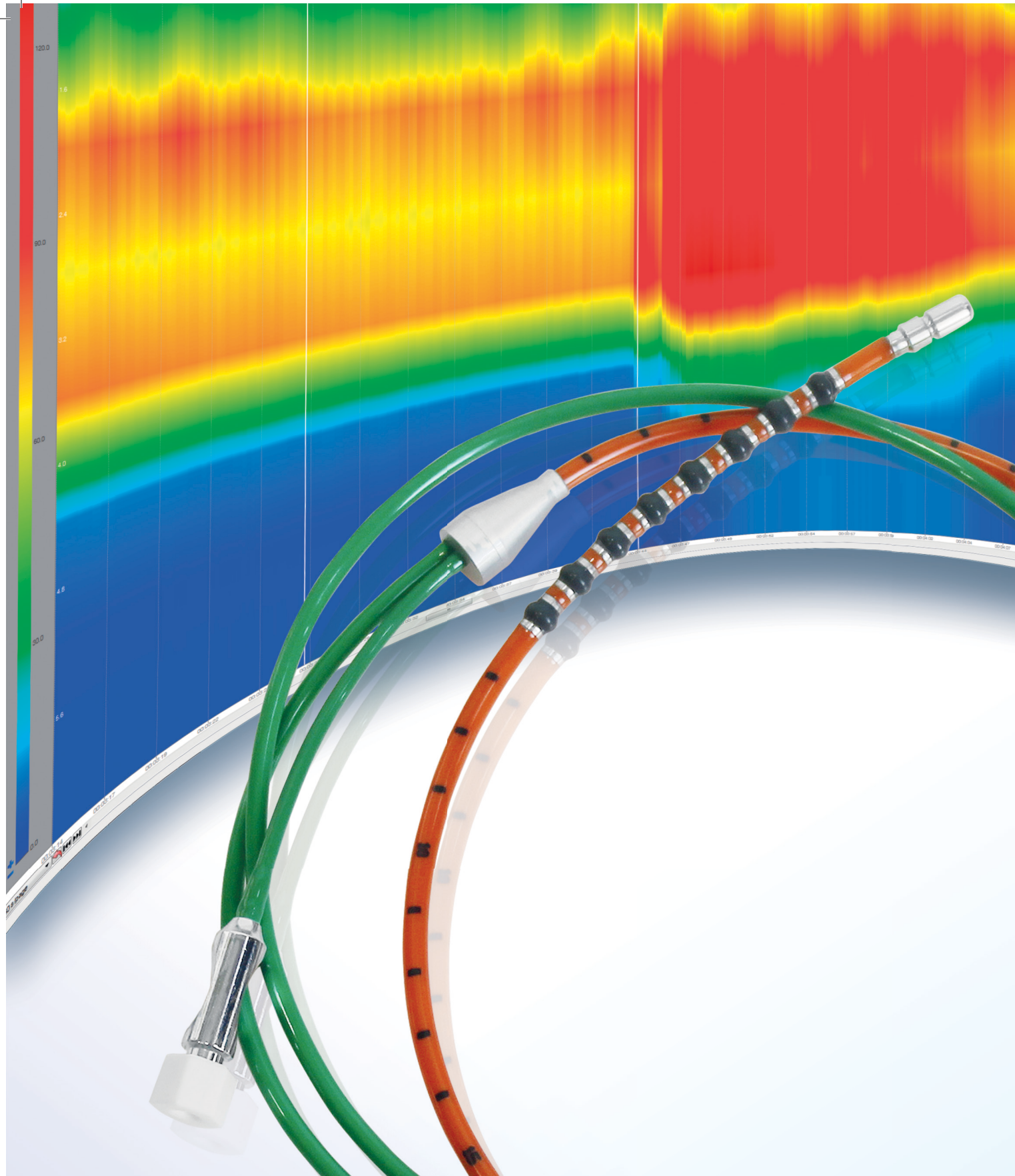


Anorectal Manometry

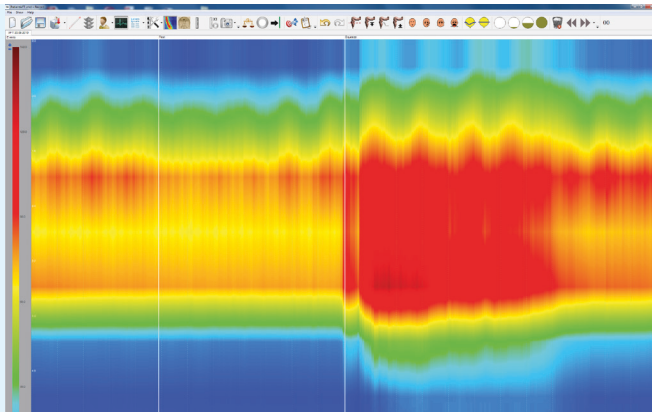
Rapid diagnosis of defecation disorders

- Total procedure in 15 minutes
- Automated Analysis / Fast learning curve
- Integrated Scores (CCIS, CACPCS, CCCS)



Anorectal Manometry

Rapid diagnosis of defecation disorders

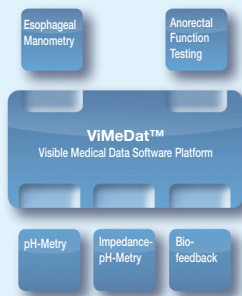


Defecation Disorders

With our Anorectal Manometry system a comprehensive evaluation of the anal canal, rectum, and pelvic muscles is quickly done. Using the results obtained will allow a rapid diagnosis of defecation disorders related to muscle control/response patterns.

The catheter is equipped with multiple sensors allowing for one time placement and no need to do withdrawals during the procedure. Resting, Squeezing, Straining, Coughing maneuvers are easily done and by simulation of fecal bolus with a balloon full assessment of RAIR (anorectal inhibitory reflex) and sensations are also obtained.

In combination with the ViMeDat™ (Visible Medical Data) software arises an integrated system for user friendly Defecation Disorder Diagnostics. The system has a number of specific analyzes available through an intuitive graphical user interface. The reports are fully configurable and Microsoft Word, OpenOffice and LibreOffice compatible.



Technical Data

Multi-use catheter, 8 circumferential sensors spaced 0.8 cm apart, Integrated balloon channel
Measurement range: -50 to +300 mmHg

Data Resolution

Data resolution 16 bit
Sampling frequency 10-50 Hz

Software Requirements

Computer USB connection, 2 GB RAM
1 GB free HD space, Mouse
Display Minimum 800 X 600
Operating System Windows XP, Windows Vista,
Windows 7, Windows 8,
Mac OS X 10.5 or higher
Linux Ubuntu 8.04 LTS or higher

Various balloon sizes available.

Therapeutic options for pelvic and anorectal muscle retraining (biofeedback) is available.

Standard Instruments GmbH
Wertstrasse 12
76189 Karlsruhe
Germany
Tel. +49 721 551986
Fax +49 721 551987
info@stdi.de
www.stdi.de

Standard
Instruments

