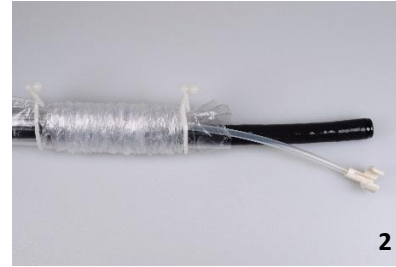


Check endoscope diameter: 8.5 - 13.5 mm

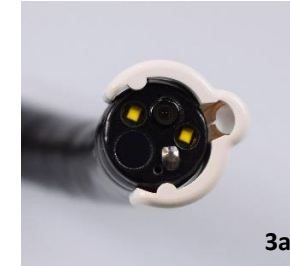
1. Take parts out of the packaging.
2. Place the endoscope sleeve tube on the endoscope.
3. Place the AWC attachment onto the endoscope tip. Ensure that the endoscope reaches the stoppers (3a).
For endoscope diameter < 10 mm, first push the silicone nozzle onto the endoscope until it is flush and then mount the AWC attachment up to the stoppers (3b).
4. Tape the AWC attachment to the endoscope.
5. Attach a second adhesive strip with overlap, approx. 1 cm behind the first adhesive strip (5a and 5b).
6. Position the AWC adapter by putting the clasp around the endoscope handle (6a). Secure the adapter by attaching the rubber ring in the tab provided on the clasp (6b).
7. Attach an additional adhesive strip to the endoscope shaft, approximately 10 cm below the AWC adapter. The AWC shaft should run straight along the endoscope and must not be twisted around.
8. Remove the plastic clamp that faces the attachment.
9. Secure the end of the sleeve with an adhesive strip directly on top of the second tape (5a) of the attachment. The two remaining tapes are spare parts.
10. Pull back the endoscope sleeve to the proximal end of the endoscope using the small tube.
11. Remove the remaining plastic clamp. Remove the endoscope sleeve tube.



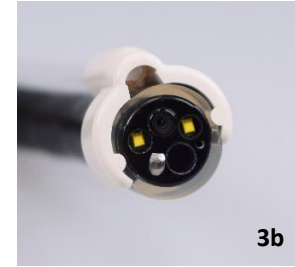
1



2



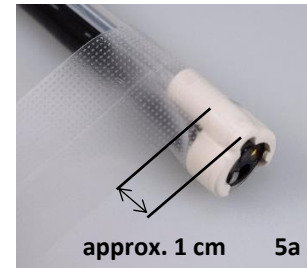
3a



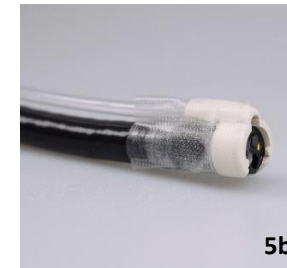
3b



4



approx. 1 cm 5a



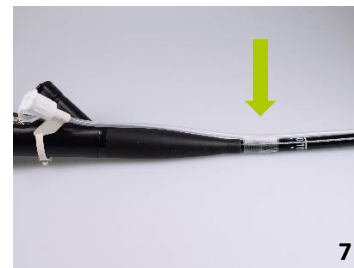
5b



6a



6b



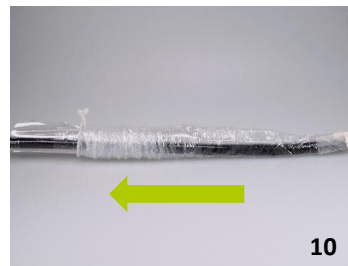
7



8



9



10



11



12



Assembly video

Instrument	Application	BOWA ARC 400	ERBE VIO 3
 AqaNife®	Marking	Modus GastroCoag; effect 1; power 20 W	Forced Coag, effect 2, 40 W
	Cutting	Modus GastroKnife; (slow, medium, fast)*; effect 3*; no power adjustment	ENDO CUT I, effect 2, cutting duration 3, cutting interval 3
 Traction Polypectomy Snare	Large coagulation zone Slow cutting speed	GastroLoop slow; effect 3*	ENDO CUT Q, effect 3**, cutting duration 1, cutting interval 6
	Smaller coagulation zone Medium cutting speed	GastroLoop medium; effect 3*	ENDO CUT Q, effect 3**, cutting duration 1, cutting interval 3
 Coag Dissector	Marking with coagulation	Modus GastroCoag; effect 3; 20 W	Forced Coag, effect 2, 40 W
	Grasping and coagulation	Moderat Coag; effect 2; from 30 W on	Forced Coag, effect 2, 40 W

* Depending on the preferences of the physician and on the treatment location or individual circumstances.

** Depending on the treatment location | Effect 1: Duodenum, coecum; effect 2: small bowel, right hemicolon; effect 3: stomach; effect 4: rectum

The recommendations listed above are approximate values and are intended to provide guidance for setting of the above-mentioned generators. When using other systems, the recommendations of the respective manufacturer must be observed. Generally, the manuals, instructions for use and application recommendations of the RF generator regarding settings have to be considered. Before using the RESECT+ products the instructions for use must be observed. This document does not replace the instructions for use of the product.

Source: Repici, A.; Enderle, M. D.; Neugebauer, A.; Manner, H.; Eickhoff, A. (2012): Grundlagen der Hochfrequenz-Chirurgie - Teil 2: Anwendungen in der Endoskopie. Principles of Electrosurgery - Part 2: Applications in Endoscopy. Endoskopie Heute; Dec2012, Vol. 25 Issue 4, p225-234, 10p, DOI: 10.1055/s-0032-1330363